

Working near powerlines

Working in close proximity to overhead powerlines or underground power cables has its hazards. Every year workers die or suffer serious injuries as a result of unsafe work practices. Contact with overhead powerlines can not only result in injury or death, but costs to repair the damage can be expensive.

This brochure is designed to inform you about safe work practices for working around overhead powerlines.

All machinery operators and other workers conducting work near overhead powerlines should also be aware of their safety obligations under the *Electrical Safety Act 2002* and adopt safe work practices in accordance with the Code of Practice "Working Near Exposed Live Parts". Copies of these publications can be obtained from the Queensland Government's Electrical Safety Office at www.deir.qld.gov.au/electricalsafety.

Practice safe work habits

- ✓ Identify all electrical hazards, assess the risks, establish control measures and review these periodically. Control measures may include, but may not be restricted to
 - applying appropriate signage at least 8 to 10 metres either side of powerlines and using visual indicators such as tiger tails fitted to the powerlines
 - using ground barriers, where appropriate
 - informing workers of required work practices.
- ✓ Ensure operators are aware of the height of their machinery in both stowed and working positions.
- ✓ Lower all machinery to the transport position when relocating.
- ✓ Work away from powerlines, not towards them.
- ✓ Contact us about placing identifiers on powerlines and power poles at your worksite and any further control measures.

Disclaimer

This brochure is not an exhaustive list of all safety matters that need to be considered. Whilst care is taken in the preparation of this material, ENERGEX does not guarantee the accuracy and completeness of the information.

ENERGEX will not be responsible for any loss, damage or costs incurred as a result of any errors or omissions or in relation to the material in this document or for any possible actions ensuing from information contained in the document.

ENERGEX Limited
GPO Box 1461, Brisbane QLD 4001
Telephone 13 12 53
Facsimile (07) 3407 4609
energex.com.au
ABN 40 078 849 055



positive energy

Look up and live

Working near powerlines



8351 23.02.2010



positive energy

Will your equipment be working near ENERGEX powerlines?

If the answer is **“yes”**, you need to follow the three step process

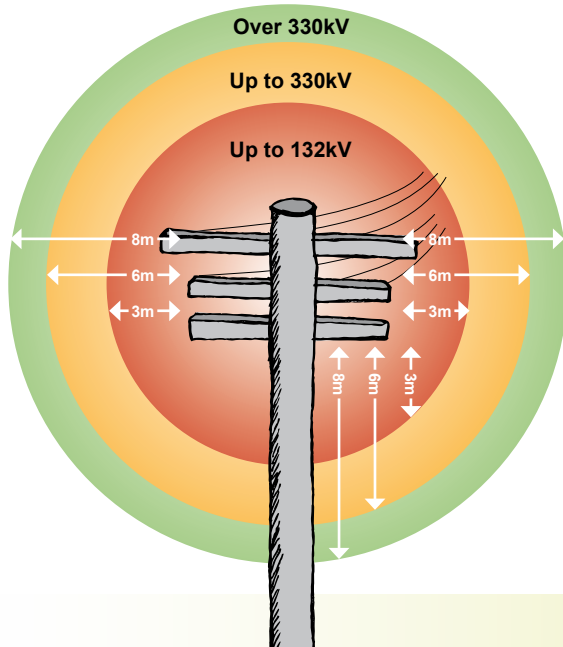
1 Planning

Exclusion zones

If the work you and your staff are planning has the potential to encroach into powerline exclusion zones, you should contact ENERGEX for advice on doing the job safely.

Exclusion zone measurements depend on the voltage of the powerline, type of work being performed and qualifications of people involved. If unsure, always seek safety advice from ENERGEX. Generally, workers and their equipment must maintain exclusion zones around overhead powerlines as follows:

- **three metres** for voltages **up to 132kV** (132,000 volt)
- **six metres** for voltages **up to 330kV** (330,000 volt)
- **eight metres** for voltages **over 330kV** (330,000 volt)



2 Contact ENERGEX

The *Electrical Safety Act 2002* requires you to contact ENERGEX if you are intending to undertake an activity where there is reasonable likelihood an object being handled by persons, operating plant, machinery or vehicles can come into direct contact with or enter an exclusion zone for an overhead powerline.

It is mandatory that you consult ENERGEX to ensure you will not encroach these exclusion zones.

You can obtain a copy of the Code of Practice for “Working Near Exposed Live Parts” from the Queensland Government’s Electrical Safety Office by calling 1300 650 662.

For a comprehensive guide to working near overhead powerlines, visit the ENERGEX website energex.com.au.

To arrange a meeting with an ENERGEX representative contact 13 12 53 prior to commencement of your work.



3 Safety Advice

Application for Safety Advice

Once you have contacted ENERGEX, a suitable date and time will be arranged to meet and discuss working near overhead exposed live parts.

Safety Advice consultation

Upon consultation with ENERGEX and the person responsible for the work site, ENERGEX may determine the safety control measures to be implemented before any work is to commence.

Issue of Safety Advice

When control measures have been implemented, work may commence as indicated on the Safety Advice on working near ENERGEX exposed live parts.

Safety Advice relinquishment

Once the work has been completed, you must notify ENERGEX immediately and return the signed Safety Advice document to ENERGEX.

